

GREEN PLANET

WIND POWER

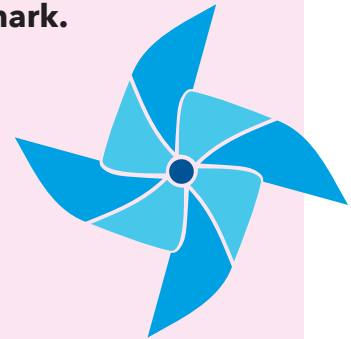
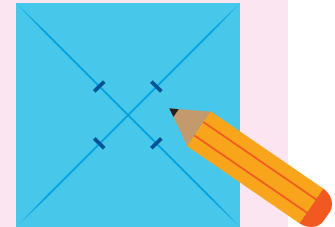
TRY THIS!

MAKE A PINWHEEL AND BLOW!

Make a pinwheel to see how wind power works.
You will need the following:

- a square piece of paper
- scissors
- pencil with eraser head
- push pin

- 1 Fold a corner of the paper to its opposite corner. Do the same with the next corner. Unfold the paper.
- 2 Do you see the four fold lines in the square? On each fold line, draw a pencil mark about a third of the way from the square's center. You will have four pencil marks. It should look like this:
- 3 Cut along the fold lines. Stop cutting at the pencil mark.
- 4 Bring every other corner into the center. Overlap them a little.
- 5 Stick the push pin through all four corners. The head of the pin becomes the center of the pinwheel. It sticks out on the other side. It should look like this:
- 6 Stick the sharp end of the push pin through the eraser of the pencil.
- 7 Blow air into the pockets made by the pinwheel blades. Watch it spin!



www.jumplibrary.com



published by: **jump!**